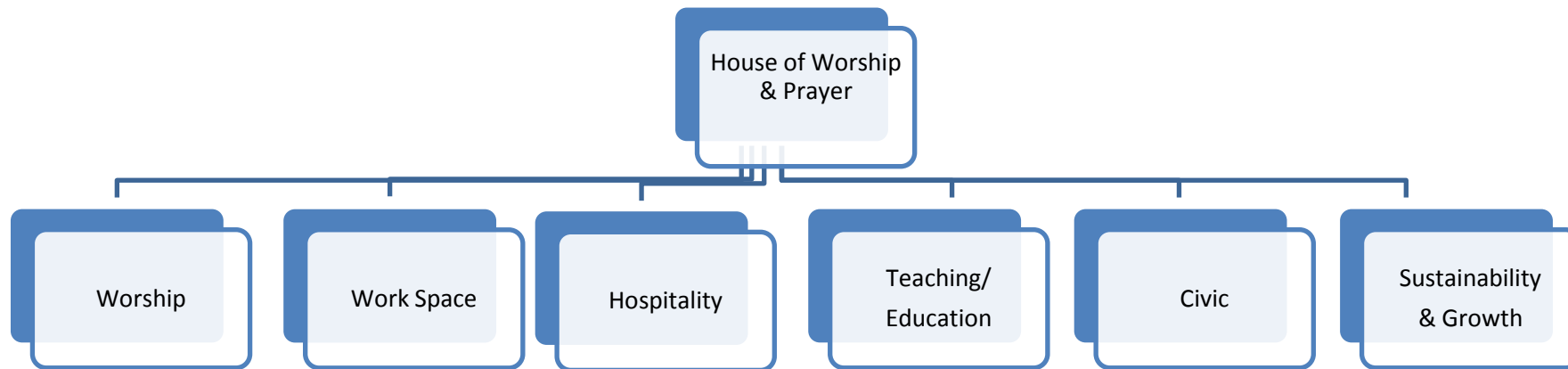


ChristChurch Cathedral: Functionality

The Mission of the Cathedral is to reflect, through its beauty, the mystery of the presence of God.

“The provision of sacred space that supports this spiritual inclination is essential to the wellbeing of the community. For these spaces to be connected to the evolving concerns of the broader community, and at the same time serving this unique function, would ensure its relevance and usefulness.”¹

This document seeks to set out the functional/space requirements of a Cathedral for Christchurch. Where possible, comments regarding the design of these spaces have been omitted. Having said that, in the discussions held in preparation of this document there was a consensus that the building should be designed with *“architecture that gives people a sense of the transcendent.”*



¹ Architectural Design Guidelines – Warren & Mahoney/Tennent & Brown, 2011 – p.10

ChristChurch Cathedral: User Requirements / Functionality

23rd September 2016

Required	Desirable	Aspirational	Description of Requirement
1. Worship:			
			<ul style="list-style-type: none"> ▪ Three services per day – Morning & Evening Prayer, Midday Eucharist ▪ Music/Choral Tradition ▪ Holy Days ▪ Ceremonies – Baptisms, Weddings, Funerals
	✓		Line of site – no pillars (was ‘required’, but cannot be achieved)
✓			Flexibility of seating & layout
✓			Nave / Transept / Eastern end Floor - all one level
✓			Private prayer space / quiet / reflective / sacrament (chapel)
✓			Processional routes
✓			Flexible seating for up to 1,200
✓			Moveable - pulpit / lectern
✓			Movable - one step stage area for choir / alter etc.
✓			Movable - choir stalls
		✓	Font - moveable
✓			Font – full immersion – running water
✓			Light – significant improvement of natural lighting
✓			Pipe Organ
✓			Space for the Cathedra
✓			Space for the Reserved Sacrament
✓			Exceptional acoustics – spoken word & music
✓			Bathroom facilities – including baby change facilities
✓			Technology – to communicate & enhance audio & visual elements of worship
✓			Thermal consistency – insulation & the minimal use of heating & cooling
	✓		Children’s/Family room
	✓		Sick room
✓			Transitional space between the Square & the Nave i.e. porch
2. Work			
✓			Office - Dean
✓			Office – General Manager or Associate Dean
✓			Office – Administration Support

Required	Desirable	Aspirational	Description of Requirement
✓			Office – Children’s/Young Person’s Worker
✓			Office – Communications/Fundraising
✓			Office – Office – Clergy
✓			Office – Shop Manager
	✓		Staff – space for volunteers (smoko room & kitchen)
✓			Staff – bathroom facilities
✓			Sacristy - where vestments and articles of worship are kept / clergy robing area
✓			Choir – Practice room
✓			Choir – Storage of liturgical choir robes / changing area
✓			Choir – Music library
✓			Choir – Office – Director of Music
✓			Chapter Room (Board room)
✓			Meeting rooms
✓			Storage – storage of seating when removed for functions; staging when not required etc.
✓			Storage – hospitality furniture & equipment i.e. tables
✓			Storage – archives/filing/printer
✓			Storage – walk in safe for valuable articles of worship
✓			Server room – IT / PABX etc.
3. Hospitality:			
✓			Division into sacred & non-sacred space – respecting Tikanga Maori requirement for no food in sacred spaces
	✓		Kitchen – commercial grade for catering purposes
✓			Kitchen - for normal hospitality (cup of tea)
	✓		Kitchen – with ability for ‘outreach’ i.e. soup kitchen
4. Teaching / Education:			
✓			Children’s ministry area i.e. Sunday School
	✓		Student / Youth Ministry – <ul style="list-style-type: none"> ▪ Platform/staging for music/bands ▪ Technology ▪ Flexibility of spaces including for physical activities ▪ Light ▪ Storage ▪ Breakout rooms ▪ Kitchen
5. Civic			

Required	Desirable	Aspirational	Description of Requirement
✓			Civic functions – dinners, events, concerts, lectures etc.
✓			Western porch – transparency of the transition from the Square to the Nave
✓			Western porch – ability to use as backdrop to services in the Square
✓			Tower – bells
	✓		Tower – public viewing platform
	✓		Crypt – could be used for café/shop/museum/meeting spaces etc.
6. Sustainability & Growth			
	✓		Income stream - cafe
✓			Income stream - shop
✓			Income stream - tower
✓			Income stream – events, concerts etc.
	✓		Museum – telling the story of the Cathedral / display items from ‘old’ building
✓			Parking
	✓		Green Star Rating
✓			Site utilisation – removal of impediments to the full utilisation of the site i.e. reserves & easements